

# Silverwoods of Lancashire

## April Sale On Thursday 20<sup>th</sup> April 2017 at 10.00am

at the Silverwoods Auction Room  
Clitheroe Auction Mart  
Lincoln Way  
Clitheroe, Lancashire, BB7 1QD

### Viewing Times

Tuesday 18<sup>th</sup> 4.00pm – 6.30pm  
Wednesday 19<sup>th</sup> 10am – 2pm  
Thursday 20<sup>th</sup> from 8.30am to start of sale  
Or by appointment  
Sale Starts at 10am

Tel: 01200 423322 Fax: 01200 429263  
Buyers Premium – 18% (including VAT)

Entries are invited on every Monday between  
9am – 3pm  
Other times available by appointment  
Please contact Wilf Mould

Lot No   Description

## Ceramics & Glass

- 1      A Poole pottery Living Glaze Gemstone Bowl, with orange, blue and aquamarine glazed finish, 34.5cm diameter and two small Ginger Jars from the 2005 collection   £35-50
- 2      A Carlton Ware Jazz style Vase, shape 496, pattern number D/3335, 3700, decorated with gilt highlighted flowers and abstract designs on a mottled sea green ground, 20cm high   £40-60
- 3      A Royal Lancastrian pottery Bowl, 1950's internally silver fern leaf decoration on grey ground, 23cm diameter, impressed marks and a small Troika style vase of rectangular form with incised stylised decoration to front and back, no marks, 18cm high (2)   £40-60
- 4      A Pilkingtons Royal Lancastrian Vase of mallet shape with brown painted twig decoration on sandy ground, shape number 3164 and a similar style footed Bowl decorated by Gladwys Rogers, shape number 171, 15.5cm diameter, both bear impressed factory marks (2)   £40-60
- 5      A Pilkingtons Royal Lancastrian Lustre Bowl, internally decorated by Gladwys Rogers with fruiting grapevine, on copper lustre ground, repeating silver spots externally around the rim on red/copper lustre ground, impressed factory mark 1X and painted artist monogram, 25.5cm diameter and a green narrow neck ovoid Vase, (repair to rim), impressed factory mark and number 2342, 17cm high (2)   £100-150
- 6      Sheila Casson stoneware: a matching set of seven mottled glaze Goblets, 12cm high, Michael Casson stoneware: three Storage Jars with covers, of similar glaze, the largest 19cm diameter, all with stamped cypher (10)   £60-100.

Lot No   Description

- 7      A collection of ten Royal Albert Beatrix Potter figures including: Benjamin Wakes Up, Mrs Rabbit Cooking, Fierce Bad Rabbit, Peter in Bed, John Joiner and others (10)   £50-80
- 8      A collection of ten Royal Albert Beatrix Potter figures including: Alderman Ptolemy, Hunca Munca spills the Beads, Diggory Delvet, No more Twist, Tom Thumb, Hunca Sweeping (10)   £50-80
- 9      A collection of ten Royal Albert and a Royal Doulton Beatrix Potter figures including: Mother Ladybird, Tiggy Winkle, Squirrel Nutkin, Peter with Daffodils, Old Mr Bouncer, Tommy Brock (11)   £50-80
- 10     Five Beswick Beatrix Potter figures, each with gold backstamp: Flopsy, Mopsy and Cottontail, Tom Kitten, Little Pig Robinson, Johnny Town Mouse and Mrs Rabbit   £50-80
- 11     Five Beswick Beatrix Potter figures, each with gold backstamp: Benjamin Bunny, Mrs Tiggy Winkle, Goody Tiptoes, Appley Dapply and Jeremy Fisher   £50-80



2



5

Lot No    Description

- 12    Five Beswick Beatrix Potter figures, each with gold backstamp: Hunca Munca, Old Woman who lived in a shoe, Benjamin Bunny, Mrs Tittlemouse and Little Pig Robinson £50-80



12

- 13    Five Beswick Beatrix Potter figures, each with gold backstamp: Johnny Town Mouse, Mrs Rabbit, Benjamin Bunny, Ribby and Mrs Tiggy Winkle £50-80

- 14    Six Beswick Beatrix Potter figures: Squirrel Nutkin, Goody Tiptoes, Old Mrs Brown, Lady Mouse, Miss Moppet and Tailor of Gloucester £60-90

- 15    Six Beswick Beatrix Potter figures: Pigling Bland, Tommy Brock, Peter Rabbit, Jemima Puddle Duck, Timmy Tiptoes and Timmy Willie £60-90

- 16    A Beswick pottery model of an American Indian astride a Skewbald Horse number 391 £150-200



16

- 17    A Beswick pottery hunting group: a Huntsman in red jacket astride brown horse, a Huntswoman astride grey horse, one fox and three hounds (6) £150-200

Lot No    Description

- 18    A Beswick pottery model of a Shorthorn Bull Gwersylt Lord Oxford 74th, number 1504 £200-300

- 19    A Border fine Arts model of a grey horse and jack russell, number B0924A Faithful Friends by Anne Wall, limited edition 332 of 500, circa 2005 on wooden base, 33cm high £120-200



19

- 20    A Border Fine Arts model of a Limousin Bull by Jack Crewdson, number B0531, limited 31 of 750, circa 1999, 22cm high £100-150

- 21    A Border Fine Arts model of a Belgian Blue Bull by Jack Crewdson, number B0833, limited edition 318 of 500, circa 2004, on wooden plinth, 21cm high £100-150

- 22    A Border Fine Arts model of a Belgian Blue Cow and Calf by Jack Crewdson, number B0929, limited edition 218 of 500, circa 2004, on wooden base, 22cm high £100-150

- 23    Royal Doulton, two Figural Models, The Auctioneer HN2988, The Judge HN2442 (2) £40-60

- 24    Royal Doulton, two Figural Models, Sailors Holiday HN2442, The Huntsman HN2492 (2) £40-60

- 25    Royal Doulton, a Figural Model, The flower Seller HN789 £50-100

- 26    Royal Doulton, two Figural Models, Sea Harvest HN2257 and Shore Leave HN2254 (2) £40-60

Lot No   Description



26

27 Royal Doulton, a Figural Model, The Balloon Seller HN583 £40-60

28 Royal Doulton, two Figural Models, Pride and Joy HN2945, Prized Possessions HN2942 (2) £40-60



28

29 Royal Doulton, two Figural Models, Past Glory HN2484, Belle O' The Ball HN1997 (2) £50-80

30 Royal Doulton, three Figural Models, Charlotte HN2421, Secret Thoughts HN2382, Ascot HN2356 (3) £50-80



30

31 Royal Doulton, three Figural Models, At Ease HN2473, Laurianne HN2719, Meditation HN2330 (3) £50-80

32 Royal Doulton, a set of seven Character jugs, Henry VIII and his six wives £40-70

Lot No   Description



32

33 Royal Doulton Dickens ware, a fifteen-piece Coffee Service for six places in the Alfred Jingle pattern consisting of six cups, six saucers, coffee pot, cream jug and sugar bowl £80-120

34 A pair of Royal Doulton flambé Book Ends in the Pilou Gate design numbers BA76 and BA77 modelled by Shane Ridge and hand decorated, limited edition 62 of 100, 17cm high £130-200



34

35 A Royal Doulton miniature pottery Wall Mask as The Jester, HN1609, impressed number indistinct, 7cm long £70-100



35

Lot No    Description

36    A collection of five limited edition Coalport bone china Figures depicting Royal Brides: Queen Victoria; Princess Alexandra; Queen Mary; Queen Elizabeth Queen Mother; The Queen, sculptured by John Bromley, commissioned by Compton and Woodhouse, 1990-1994, each limited to 7,500 pieces and each with certificate (5)    £50-100

37    A Royal Worcester blush ivory two-handled Vase and Cover, number 1572, of urnular form, mask capped handles and moulded borders, decorated with thistles and spring flowers, gilt highlighted, knop repaired, 28cm high    £250-350



37

38    A Royal Worcester blush ivory porcelain two-handled Vase, number 2151, of slender form, moulded border, decorated with thistles and spring flowers, gilt highlighted, circa 1901, 29cm high    £150-250

39    A Rare Royal Worcester 19th century porcelain figural model Boy in a Boat, a nude boy in a small boat on oval wave base, gilded and with pink border, one of a series of cherub like models produced by Royal Worcester circa 1870, green printed mark to underside, 13cm long    £200-400

Lot No    Description



39

40    A Royal Worcester Spill vase of waisted form, painted with apples and damsons signed Moseley, 12cm high and a 16cm Plate painted with apples and blackberries, signed F.R Budd (2)    £100-150

41    A Royal Worcester Cabinet Plate, painted with apples and grapes on mossy ground, within a gilt border, signed J. Smith, 27cm diameter, black printed mark    £150-200



41

42    A Royal Worcester Fruit Bowl, painted internally and externally with fruit, on a gilt foot with a gilt rim, signed J. Smith, 23cm diameter, black printed mark    £400-500



42

43    A Royal Worcester Ginger Jar, shape number 2826, painted in the round with fruit on a mossy bank, signed H. Ayrton, lacks cover, printed black mark, 16cm high    £200-250

Lot No    Description

- 44    A Royal Worcester Pot Pourri Jar, shape number 1286, painted in the round with fruit against a mossy bank, signed J. Smith, lacks lid and inner cover, painted black mark, 17.5cm high £120-180



44

- 45    A Moorcroft Potter Baluster Vase, tubeline decorated in the Burdock design by Philip Gibson, impressed and painted marks, circa 1999, 15.5cm high £120-170



45

- 46    A Moorcroft Pottery Vase, tubeline decorated in the Sweet Briar design by Rachel Bishop, impressed and painted marks, circa 1997, 21cm high £150-200



46

Lot No    Description

- 47    A modern Moorcroft pottery Ginger Jar, tubeline decorated in the Isis pattern, possibly by Emma Bossons, date mark 2003, impressed and printed marks, 11cm high £80-120

- 48    A Moorcroft pottery Ginger Jar decorated in the Oranges and Blossom pattern, circa 2009, 11cm high and a small dish in the Panache pattern, collectors club 2004, 12cm diameter (2) £70-100

- 49    A Moorcroft pottery Vase of baluster form decorated by Marie Penkethman, impressed and painted marks, circa 1996, 16cm diameter £60-90

- 50    A Moorcroft pottery Vase of baluster form decorated in the Spike pattern, impressed and painted marks, circa 1997, 16cm high £70-100



50

- 51    A Moorcroft pottery Vase of tapering narrow neck form, decorated with acorns and butterflies, impressed and painted marks, circa 2009, 16cm high £50-70

- 52    A Moorcroft pottery Vase of baluster form decorated in the Windrush pattern, impressed and painted marks, circa 2000, 16cm high £70-100

- 53    A Moorcroft pottery Vase of baluster form decorated by Rachel Bishop in the Gypsy pattern, impressed and painted marks, circa 1999, 20cm high £100-150

Lot No    Description

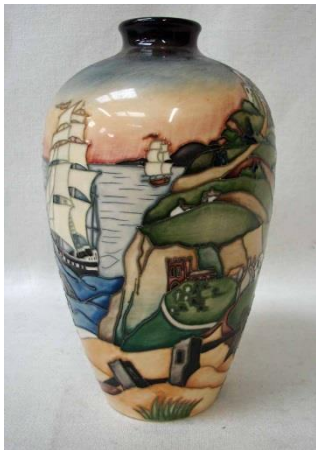
54    A Moorcroft pottery Vase of baluster form decorated by Anji Davenport in the Angels Trumpet pattern, Collectors Club piece, impressed and painted marks and signature, circa 1998, 19cm high £100-150

55    A Moorcroft pottery Jug/Ewer of stylised angled form decorated by Kevin Goodwin with fox and badgers in a winter landscape, impressed and painted marks and signature, number 67, circa 2011, 20cm high £200-300



55

56    A Moorcroft pottery Vase of narrow neck baluster form decorated by Paul Hilditch in the Smugglers Cove pattern, limited edition 105 of 200, impressed and painted marks and signature circa 2010, 24cm high £300-400



56

57    A Moorcroft pottery Vase of baluster form decorated by Anji Davenport with a winter scene of sheep and dog and Massey Ferguson 35 tractor, impressed and painted marks and signature number 146, circa 2011, 27cm high £300-400

Lot No    Description



57

58    A pair of 19th century decorated porcelain Figural Groups, possibly Sitzendorf, each depicting a seated courting couple within a scrolling Rococo style arbour set on naturalistic moulded base, underglaze blue mark and number 177, impressed factory mark, 20cm high £60-90

59    A late Victorian hallmarked silver top Japanese porcelain Perfume/Scent Bottle of narrow taper neck globular form, chequer board decorated with devices and calligraphic characters, Birmingham 1887, painted mark to base, 19cm high £30-50

60    A mid-century cut glass Decanter of ovoid bottle shape, hallmarked silver collar Birmingham 1957, engraved with repeating vine, facet and strawberry cut, with conforming stopper, 40cm high £40-60



60

Lot No    Description

61    A pair of late 19th century Art Nouveau glass Decanters of pear shape, four footed with silver pouring mounts and silver metal bound flame shape stoppers, registration number 266890, silver hallmark Birmingham 1895, 35cm tall    £60-100

**Collectables & Objects**

62    A pair of bronze patinated French 19th century spelter Figures as flower sellers, 29cm high    £30-40

63    A large bronze Medallion, commemorating Abraham Lincoln, raised head and Abraham Lincoln to obverse, reverse inscribed Inaugurated President of the United States March 4. 1861. Second Term March 4. 1865. Assassinated April 14. 1865, 7.5cm diameter    £100-150



63

63A    Seven English and European bronze and white metal Medals as follows: Joseph Witterwulge, L'Effort; Joseph Frey, Loucien Coudray and H Doubois, Rouen; Josue Dupon, L'Effort; Maurice Dellanoy, Le Chaleur du Soleil; Emile Boudon, Printers at Work; J.C. Wienecke, Dutch Railways, 4cm - 7cm diameter    £80-120



63A

Lot No    Description

64    An Arts and Crafts Copper Tray of circular form with toothed rim, inlaid with brass and white metal depicting stylised leaves and fruit, possibly by Christopher Dresser for Benham and Froud, 20.5cm diameter    £50-100

65    A late 19th century planished copper tray of two handled, dished oval form with white metal beaded edge and rosettes, possibly by Hugh Wallace, 39cm by 27cm    £40-60

66    A 19th century Scottish brass Alms Dish of circular form, centrally embossed to the well with a Stag's Head, inscribed Sic Itar Ad Astra Canongate 1774 Renewed 1812, 28cm diameter    £40-60

67    An Austrian cold painted Strike-Lite spelter Table Lighter modelled as a spaniel retrieving a cock pheasant, on a wooden base with wand, 26cm long    £200-250



67

68    An early 20th century cold painted spelter model of a Horse and Jockey as a Table Lighter, with integral striker, on a polished black glass base within an embossed wooden plinth, 20cm high overall    £80-120



68

Lot No    Description

- 69    A Japanese cloisonné Lidded Box of circular form decorated with a pheasant amongst foliage on jade green ground, 7cm diameter    £30-50
- 70    A Chinese 19th century carved ivory figure of a sage in robes holding a fan, one hand missing, 21.5cm high    £200-300
- 70A    A Japanese possibly late Edo period Matchlock Pistol, 9.3cm octagonal barrel with front sight, rear sight and circular white metal inlay, hardwood stock with brass mounts and furniture, hanging holes and inlaid brass flower    £250-350
- 71    Kampf um's Dritte Reich (Stuggle for the Third Reich) Ninety-two page album of cigarette cards produced in 1933 by Cigaretten-Bilderdeinst, all cards pasted inside with no losses, original box and Im Reiche Des Films Josetti Film Album No 1, a German album of cigarette cards of Film Stars circa 1935, thirty-six pages of cards all pasted inside with no losses (2)    £100-150
- 72    An early Mickey Mouse fabric toy possibly by Deans Ragbook, 21cm high    £70-100
- 73    A Hornby Dublo LT25 LMR, 8F 2-8-0 Freight Locomotive and Tender, LMS 8297, with original stripe blue box and a 4-6-0 Locomotive and Tender B.R. 45473 (2)    £50-80



73

- 74    A Hornby Dublo 4-6-2 Locomotive and Tender Princess Elizabeth, LMS 6201 and a 2-10-0 Locomotive and Tender, B.R. 92166    £40-60

Lot No    Description

- 75    A Hornby 00 gauge B.R Standard Class 9F 2-10-10 Evening star, boxed and an LMS R.404 Class 47 Co-Co Diesel, boxed (2)    £40-60
- 76    A Palitoy Mainline 00 gauge Royal Scot Crimson LMS 6100 4-6-0 Locomotive and Tender, boxed and an Illustrious Green B.R 45532 4-6-0 7P Patriot Class Locomotive and Tender, boxed (2)    £40-60

Railway Memorabilia

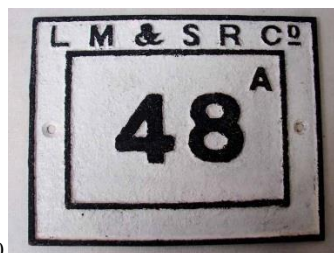
- 77    A pair of Lancashire and Yorkshire Railway drawings on line, relating to the works at New Street over Hebble Brook at Halifax, circa 1882, by Jas Brice Sons and Ibilson, 68cm by 118cm    £40-60
- 78    A National Union of Railwaymen, coloured pictorial certificate inscribed to Bro. Frank Gough, Leader of National Union of Railwaymen, 66cm by 50cm overall    £50-100



78

- 79    L.Y.R hanging wooden double sided sign, 'gentlemen' 25cm by 76cm    £120-150

- 80    A cast iron LM&SR Co Bridge Plate or Viaduct Marker, 48A, in a double border, oblong, 24cm by 31cm    £30-50



80

Lot No    Description

81    L&YR c/1 Water Column Number Plate 95, this column was on the platform at Wigan Wallgate station, 31cm by 23cm £60-100

82    L&YR Telegraph Sender/Tapper used for morse telegraph communications at the LYR headquarters at Hunts Bank Manchester and was rescued from there during demolition    £120-150



82

83    L&YR Telegraph 'hood' used for morse telegraph communications at the LYR headquarters at Hunts Bank Manchester and was rescued from there during demolition    £150-200



83

84    L&YR Signal box relay used at the LYR headquarters at Hunts Bank Manchester and was rescued from there during demolition    £50-80

85    A Lancashire & Yorkshire Railway signal box double-line block instrument trafalite plated 'BIRKDALE', in good original condition    £250-300

*Note: Birkdale signal box was a LYR Hipped Roof design with a 24 lever frame on the Southport-Liverpool electric line, it opened in 1905 and closed on 11th MARCH 1994, although it still exists*

Lot No    Description



85

86    Six cast iron ex signal box LYR Lever Description Plates; Main, Loop, Down Home, Up Main, Down Siding & Down Main To, 4cm by 3.5cm    £90-120

87    LYR Refreshment Dept Vesta matchbox from Liverpool Exchange Hotel, 4cm by 3.5cm    £90-120



87

88    L&YR loco driver's 'long oiler' marked Blackburn, used for inaccessible oiling points inside the motion, 77cm long £60-90

89    LYR loco driver's side handled Oil Purer, stamped 'LYR' and brass plated 'Knottingley Joint', 18cm high £80-120

90    LYR loco driver's side handled Oil Purer, stamped 'LYR' and brass plated 'Entwistle Station' 18cm high    £90-120



90

Lot No    Description

- 91    LYR Finial as used atop signals and station buildings, 76cm high £80-120
- 92    A fully flanged platform enamel sign - 'British Rail Birkdale' in rail-blue livery, 203cm long    £130-160
- 93    'LONDON MIDLAND AND SCOTTISH RY' advertising poster board, consisting of 3inch letters, 198cm long    £200-250
- 94    Double sided maroon carriage board 'Bristol/Leicester', 71cm long £80-120
- 95    Double sided maroon Carriage Board 'London/Manchester', 81cm long £100-150
- 96    Double sided maroon Carriage Board 'Bradford/London', 71cm long £70-100
- 97    Double sided maroon Carriage Board 'Chester/Rhyl', 71cm long    £120-150



97

- 98    LYR railway policeman's wooden Truncheon, marked 'L&Y Rly', black lacquer, 37cm    £75-100



98

- 99    LYR steam locomotive Headlamp £180-250
- 100    LBSCR Carriage Lamp, handle top stamped 'LB&SCR' with steel plate 'P.Way. Dept. East Croydon' and a brass plate 'Ridsdale etc...' with reservoir marked LB&SCR £280-350

Lot No    Description

- 101    LMS 'Passenger Guards Emergency Gas Proof Lamp' (General Purpose Lamp), embossed LMS on top, complete with low cone burner & LMS vessel plated for 'Petroleum only' £90-120
- 102    Midland Railway 'Passenger Guards Emergency Gas Proof Lamp' (General Purpose Lamp), brass plated Midland Railway on top with brass plate 'LMS RAILWAY - For Petroleum Only' on the vessel and a low cone burner £60-80
- 103    NER 'Passenger Guards Emergency Gas Proof Lamp' (General Purpose Lamp), brass plated 'NER', with 'NER M DEW' vessel and reflector marked NER Co    £70-100
- 104    Southern Rly. Eastleigh pattern Drivers small size Hand Lamp, three aspect with folding wire back handles, top stamped 'loco Dept. S[E]R'. Body stamped 'S[E]R', complete with original vessel, 'SR' burner, reflector and all glasses    £120-150
- 105    LNER three aspect Hand Lamp complete with all glasses and brass plated 'Retford'    £60-80



105

- 106    LNER four aspect Hand Lamp complete with all glassed embossed LNER stamped 10732 and brass plated 'New England'    £60-80

Lot No    Description

107    GWR brass collared four aspect Hand Lamp, complete with all glasses, GWR burner, stamped GWR 1934 on the body and a Polkey makers plate £60-80

108    Lyr Hand Lamp stamped 'Goods Dep Southport' with correct Lyr vessel and all original type slatted glasses £220-250

109    LNER, Great North of Scotland Railway pattern three aspect Hand Lamp by Robb, Moore and Neill, Ships Chandlers, complete with all glasses and with a brass plate, DUFFTOWN No 5    £300-400



109

110    GNR three aspect Hand Lamp with brass plate to body 'London & North Eastern Railway Midville 3', complete integral vessel, burner, reflector and all glasses    £200-350



110

Lot No    Description

111    LSWR four aspect Hand Lamp with side door, top plated 'E' and '221', body stamped 'L&SWR' and plated '221, Sherborne' and 'J. Defries & Sons Manufacturers London', complete with 'LSWR' vessel and reflector, 'SR' burner and all glasses    £280-350



111

112    SR Drivers small three aspect Hand Lamp, top stamped 'Loco Dept. SR' and the body 'SR Dover Loco', complete with all glasses    £160-200

113    North British Railway three aspect Hand Lamp, stamped COWLAIRS, complete with all glasses, restored and retaining its embossed brass bulbitts plate    £300-400



113

114    Highland Railway Hand Lamp brass plated 'HR', also 'HR Libbster Station' and with 'J Ratcliffe' makers plate, complete with all glasses including a rare original green glass rather than the later blue example    £280-350

Lot No    Description

Lot No    Description

**Interior Decor & Clocks**

115    A French 19th century gilt metal Carcel Table Lamp, the drum shape base housing key wound clockwork mechanism forcing oil through the centre of the Lamp to its burner, bears label Lampe Carcel Perfectionnée, glass chimney and etched glass shade, 40cm without chimney    £200-300



115

116    A good quality silver plated Oil Lamp by Elkington and Co., Adam style tapering column on square base with urn shaped surmount, acanthus leaf decorated, Hinks Patent burner above diamond and swag cut glass reservoir, glass chimney and dome shape cut glass shade, base stamped Elkington Plate 19227, 80cm high including chimney    £400-600



116

117    A late 19th century marble sculptural model of an Eagle on a rock, wings outstretched, later converted to a table Lamp with globe shape marble shade, 57cm high    £30-60



118

118    After Frederic Remington, (American 1861-1909), Bronco Buster, bronze figural group on oval base, signed, limited number 8/100, set on black marble plinth, 60cm tall overall    £380-450



119

119    A good quality brass Skeleton Clock, 19th century, scrolling pyramid form with silvered dial set with Roman numerals, single chain driven fusée movement, raised on a stepped oval white marble base, complete with glass dome, supported on marble bun feet, height with dome 41cm    £1000-1200

120    A good quality Skeleton Clock, 19th century, Cathedral form with silvered dial set with Roman numerals, single cord driven fusée movement striking the hour on a bell, set on a velvet plinth within an ebonised oval stand on shallow bun feet, height with dome 43cm    £800-1000



120

Lot No    Description

- 121    Eric Watson of Saddleworth, a good quality brass Skeleton Clock with silvered dial, Roman and Arabic numerals, fusée movement, under glass dome, 30cm high overall    £200-300

*Note: Eric Watson was responsible for building one of a small number of replica Wallingford Clocks. The original Wallingford Clock was designed and partially constructed by Richard of Wallingford, later Abbot of St Albans from 1327-1336. The replica clocks were constructed from notes discovered in the Bodleian Library Oxford in 1965*



121

- 122    A French 19th century bronze, white marble and gilt enhanced figural Mantel Clock, the bronze patinated surmount a peasant girl gathering water at a well, the gilt metal mounted case with white enamel dial, Roman numerals, twin winding apertures signed J. Hall a Paris, the eight day movement striking on a bell supported on gilt metal scroll fore feet, 54cm high    £150-200

- 122A    An Edwardian inlaid rosewood Mantel Clock of lancet form, circular white enamel dial with Roman numerals inscribed Dent 33 Cockspur St London behind brass framed glass door, French movement signed AD Mougin Deux Medailles number 55813 striking on a gong, twin brass carry handles, supported on four brass bracket feet, 30cm high    £70-100

Lot No    Description

- 123    John Green, London, a walnut Longcase Clock, eight day movement striking the hours on a bell, 13inch brass arch dial with silvered plaque signed John Green London, silvered chapter ring with Arabic and Roman numerals, subsidiary seconds dial at 12, twin winding apertures, cast spandrels, the hood with Pagoda top, ball and spire finials, gilt metal capped pilasters flanking the glazed door, pierced gilt work top and sides with red silk backing, the trunk with burr walnut door flanked by brass capped quarter columns, panelled box base on shaped support, 234cm high by 46cm wide    £500-800



122



123

Lot No   Description

## White Metal & Silverware

124   A mid-20th century Danish stainless steel four-piece Tea Service by Georg Jensen, pattern number A4, U form with reeded loop handles and slender tapering knops   £80-120

125   A pair of Austro Hungarian 800 grade silver Candlesticks of hexagonal baluster form on turned stepped bases supported on three cast feet, engine turned and engraved decoration, circa 1870, 16.16oz, 27cm high   £200-350



125

126   A set of twelve Scandinavian Tea Spoons by David Anderson, 830 grade with flat twisted handles and ball terminals, 12.5cm long, 4.28oz, in fitted case   £50-80

127   An early 20th century silver Hip Flask of typical form with removable lower sleeve, hinged screw top, London 1918, 4.44oz, 12cm long   £40-60



127

128   A late 20th century silver Jug of helmet shape on haystack foot, S scroll handle, London 1973, 7.91oz   £60-80

Lot No   Description

129   A late 19th century silver Vase of flared tapered form, repoussé decorated with scrolls and foliage, reserved with a clean cartouche, inscribed Goldsmiths and Silversmiths Company, 4.54oz, 18cm high, London 1895   £40-60



129

130   A silver cream Jug and matching two-handled Sugar Bowl, shaped oval form on stepped foot, Birmingham 1934, 11.73oz   £90-120

131   A 20th century silver Tazza of pierced circular form repoussé decorated with swags, on a stepped foot, London 1951, 19.32oz, 25cm diameter   £150-200



131

132   A mid-20th century silver four-piece Tea Service, canted rectangular form with ebonised handles and knops, by Thomas Bradbury and Sons, Sheffield 1923/1924, 56.25oz gross weight   £400-500

133   A mid-19th century silver lidded tankard by Benjamin Stephens, London 1861, of baluster form with hinge lid and thumb pull, S scroll handle on stepped circular base, heavy embossed decoration to the body depicting horse racing scene, gilt interior, 27.21oz, 20cm high   £300-400

Lot No    Description



133

- 134 An early 20th century silver pin cushion in the form of a Royal Navy Bicorne Hat, S Blankensee Chester, circa 1910, 10cm long    £80-120



134

- 135 An early Victorian silver Vinaigrette of rectangular form with hinged lid and pierced gilt grille, gilt interior, repoussé decorated and engine turned, by Nathaniel Mills, Birmingham 1837, 4cm long    £250-300

## Jewellery

- 136 Blue John objects: a pair of 9ct gold cufflinks of oval form with Blue John panels, 4.8g gross, a pair of white metal earrings of oval form, a small Blue John Paperweight of circular bun form centrally set with a compass, 3.3cm diameter (5)    £100-150
- 137 Mitchel Maer for Christian Dior, a white metal and paste set Flower Brooch, 7.3cm long, stamped Christian Dior by Mitchel Maer, and a gilt metal three-strand Knot Brooch stamped Christian Dior, 6cm by 5cm (2)    £60-100

Lot No    Description

- 138 Mitchel Maer for Christian Dior, a white metal and moonstone set suite of Dress Jewellery consisting of a three-strand Choker set with multiple stones in claw mounts stamped to the clasp Christian Dior Mitchel Maer, 38cm long and a pair of matching ear clips of circular form, similarly set with multiple stones and stamped, 3.5cm diameter    £100-150



138

- 139 A string of thirty-nine graduated Jet Beads of carved circular form, 9.4mm - 17mm, 55cm long    £50-70
- 140 A double string of cultured graduated Pearls with 9ct pierced box clasp, 50cm long, in fitted box    £300-350
- 141 A string of sixty-one graduated Cherry Amber Beads of oval form, 53g, 9.34mm - 24.50mm, 72cm long    £350-400



141

- 142 A string of eighteen graduated Cherry Amber Beads of oval form 108.5g, 18.72mm - 30.45mm, 52cm long    £400-500

Lot No    Description



142

143    A David Deakin (Deakin and Francis) 9ct gold Pendant Necklace, the branch effect pendant of pear shape set with two abalone panels, suspended on a 9ct gold chain, 38.8g total weight, pendant length 6cm    £350-450



143

144    A mid-20th century 9ct gold Ladies Choker as a Serpent, articulated body, engraved decoration to head and tail, a pair of rubies as eyes, 28.9g total weight    £200-300



144

145    An 18ct gold ruby and diamond Dress Ring, the stones set in two rows of five, ring size M 1/2    £130-160

Lot No    Description



145

146    An 18ct white gold and diamond cluster ring set with seven circular stones and six marquise shape stones, claw set in three tiers on a cross over shank with bar under bezel, London import mark, total weight of diamonds approx 1.32ct, ring size N, 4.8g    £600-700

### Pictures, Prints & Silks

147    A pair of J.J. Cash of Coventry silk woven pictures: The Tandem and The Four in Hand and another Autumn (3)    £30-50

148    After S W Fisher, Cherbourg Bound Titanic, pencil signed to the margin by the artist and Millvina Dean, artist proof print, 773 of 850, 35cm by 67cm    £100-150



148

149    After Henry Martens, The Storming of the Mooltan January 2nd 1849, coloured print, 48cm by 59cm    £50-100

150    Eastern England, Waghenaer (Lucas Janszoon) Noordt Custe van Engelandt, circa 1590, a hand coloured Sea Chart showing the Eastern Coastline from Blakeney in the south to Scarborough in the north, 33cm by 50cm    £150-250

Lot No    Description



150

151 J Barclay (19th/20th century) aka Horace Hammond, Wotton Surrey signed watercolour, rural landscape with girl and ducks, 31cm by 45cm £60-90

152 Theodore Hines (British fl. late 19th century), Bolton Abbey and the River Wharfe, watercolour signed Theo Hines lower right, 32cm by 49cm £80-120

153 Percy Lancaster (1878-1951), Flower Sellers, watercolour, monogrammed, 32cm by 22cm £170-220



153

154 Edwin St John (British 1878-1961), Boppart on the Rhine, watercolour, signed lower left, another by the same hand, St Omar's Well Strasbourg, a pair, each 50cm by 33cm £100-200



154

Lot No    Description

155 Amy C Reeves Fowkes (1886-1968), Primroses in a Sussex Garden, signed watercolour and crayon, 50cm by 62cm £100-150



155

156 Jessica Lofthouse interest: a large archive of one hundred and sixty-six pen and ink drawings of locations throughout Lancashire, Cumbria and North Yorkshire; twenty-eight pen and ink drawings of North American locations, twelve North American watercolours, six books including Lancashire Countrygoer, 1st edition, North Country Folklore, 1st edition - signed, Borders of the North west, 1st edition -signed and three other signed reprints and a quantity of personal papers £300-500



156

157 Fritz J Goosens (Dutch b.1943), Dutch Rural Landscape with Cattle Grazing, signed oil on canvas, 28cm by 38cm £50-100



157

Lot No    Description

- 158    English School (19th century), a pair of Scottish/Welsh Landscapes indistinctly signed, oil on canvas, 29cm by 49cm £100-120
- 159    Carl Andrew Whitfield (b.1958), Poultry by an upturned Bucket, small signed oil on board, 7cm by 9cm £300-400



159

- 160    English School, two spaniels guarding shot game, unsigned oil on canvas, 60cm by 74cm    £350-450
- 161    Willem Paerels, (Dutch) Zeebrugge 1959, oil on canvas, signed Paerels, 69cm by 58cm    £100-200
- 162    Gudrun Sibbons (b.1925), Dutch River Landscape with figures, fishing boat, cottage and windmill, oil on panel, signed, 26cm by 41cm    £200-250



162

No Lot 163

Lot No    Description

**Furniture**

- 164    Harry Tonkin, Gorran, Cornwall, a 20th century oak Magazine Table of shaped rectangular form, the top carved with trademark Tudor Rose, on four turned legs, 155cm long by 42cm wide by 38cm high    £50-80

164



- 165    A 1960's Danish Armchair, brown leather and foam upholstery on laminated ash frame, by Adriane and Ditte Heath, manufactured by France and Son, adjustable    £150-250



165

- 166    A Victorian walnut Davenport Desk with rise and fall stationery cabinet, tooled leather skiver to laterally sliding slope revealing desk top interior, bow fronted false drawers to one side, one false and three true opposing drawers £300-400

Lot No    Description

Lot No    Description

167    A Victorian oak high back Corner Chair, high back rail with pierced splat above bowed arm rest with flattened scroll ends above pierced splats and turned columns, solid seat, plain block legs interspaced with stretchers, 108cm high by 78cm wide by 63cm deep £70-100



167

168    A Victorian mahogany show wood frame Spoon Back Drawing Room Chair, scroll moulded crest rail, upholstered button back, overstuffed seat and arms, carved arm terminals and turned fore legs, brown ceramic castors, 103cm high by 69cm wide by 90cm deep £150-200



168

169    A Victorian mahogany show wood frame Spoon Back Drawing Room Chair, scroll moulded crest rail, upholstered button back, overstuffed seat and arms, carved arm terminals and turned fluted fore legs, brown ceramic castors, 106cm high by 79cm wide by 80cm deep £150-200

170    A Victorian mahogany Partners Desk, the moulded edge rectangular top with faded green tooled leather inset, above an arrangement of three frieze drawers front and reverse, each pedestal fitted with three drawers and an opposing cupboard, on plinth base, 185cm wide by 122cm deep by 75cm high £700-1000



170

171    A large George III mahogany and inlaid Library Bookcase, moulded out swept cornice above a pair of astragal glazed doors with central brass beading enclosing adjustable shelving, the lower portion having an arrangement of a pair of drawers over a pair of panelled doors, supported on splayed legs, 276cm high by 165cm wide by 40cm deep £700-1000



171

