

Silverwoods of Lancashire

February Sale On Thursday 16th February 2017 at 10.00am

at the Silverwoods Auction Room
Clitheroe Auction Mart
Lincoln Way
Clitheroe, Lancashire, BB7 1QD

Viewing Times

Tuesday 14th 4.00pm – 6.30pm
Wednesday 15th 10am – 2pm
Thursday 16th from 8.30am to start of sale
Or by appointment
Sale Starts at 10am

Tel: 01200 423322 Fax: 01200 429263
Buyers Premium – 18% (including VAT)

Entries are invited on every Monday between
9am – 3pm
Other times available by appointment
Please contact Wilf Mould

Lot No Description

Collectable Ceramics & Glass

1 An Art Deco Milk Jug by Clarice Cliff Wilkinson Ltd., in the form of a chicken, the lid with comb shape knob, yellow and black on cream ground, 16cm high £70-100



1

2 A Royal Doulton musical Character Jug, Old Charley, the clockwork movement playing Here's a Health to His Majesty, 15.5cm high £50-80



2

3 A Royal Doulton large Flambé Character Jug, Aladdin's Genie, D6791, limited edition, 1406 of 1500, 20cm high £50-80



3

4 A Royal Doulton early figurine, Victorian Lady HN728 and Greta HN1485 Rd No 768049 (2) £50-80

Lot No Description

5 Five small Royal Doulton figurines, Paisley Shawl M4, Rose HN 1368, Wendy HN2107, Lavinia HN1955 and Cherie HN2341 (5) £40-80

6 A Brethby Pottery Art Nouveau two-handled Vase of squat narrow neck form, copper effect strapwork to handles, neck and shoulders on matt black ground, applied cabouchon mounts, number 1667, chip beneath rim, 22cm high £50-80

7 A Royal Worcester, gilt highlighted satin green porcelain figure Eastern Water Carrier, number 2/125, green printed mark, circa 1905, 25cm high £80-120





7

8 A Royal Worcester blush ivory porcelain Ewer of compressed form, pattern number 1136, decorated with gilt highlighted floral sprays, gilded handle and collar, puce mark to underside, 20cm high £30-50



8

<u>Lot No</u>	<u>Description</u>	<u>Lot No</u>	<u>Description</u>
9	A 19th century Royal Crown Derby Tea Cup and Saucer, decorated in the Imari pattern number 198, blue printed mark £40-60	15	A Portuguese Palissy Majolica Wall Plate, green ground, decorated in high relief with a snake, lizard, beetle and butterfly on a naturalistic shredded pottery background, impressed mark to brown slip glazed underside, 23cm diameter £150-200
10	A sixteen piece Royal Crown Derby part Tea Service comprising, four tea cups - one stapled, six saucers and six side plates, hand painted in Imari style, number 2649, early 20th century £120-150	16	A 19th century Meissen figural group representing Summer, four cherubs with sheaves of corn on a naturalistic oval base, blue cross swords, incised 2490/96, 19cm wide, some damages £50-80
11	A Royal Crown Derby Tea Service in the Imari pattern, date codes late 19th-early 20th centuries, setting for twelve places, comprising twelve each of cups, saucers and side plates, two bread plates and a sugar bowl, 39 pieces in total £200-300	16A	A pair of nineteenth century Meissen style Pot Pourri pierced urns and covers, decorated with applied flowers and maidens heads as handles, painted panels depicting Nurse Maids with children, opposing panels of flower bouquets, set on triform bases featuring serpents, the covers stacked with flower blooms, pseudo Meissen cross swords mark, incised 396H, 33.5cm high, some damages to flower petals £150-250
12	A Royal Crown Derby porcelain two-handed Vase of narrow neck mallet form, richly gilt decorated with birds and insects amongst foliage on a cobalt blue ground, circa 1900, 13cm high £80-120		
13	A pair of early 19th century Derby figures as male and female Musicians, brightly decorated in coloured enamels, he with a tambourine, she with a zither, set on naturalistic rococo style bases, marked with iron red crown and D, 25cm high £150-200		
			
13			
14	An unusual collection of twelve Crown Derby Sampson Hancock miniature Toby Jugs, circa 1900, each identically modelled in tricorn hats but with difference colourways, crown, cross swords S. H and D marks in red, 4.2cm high £400-600	16A	
		17	A pair of Meissen Allegorical figural sculptures of ladies seated at tables stimulating their senses, one smelling a rose bloom, the other touching a bird in a cage, blue cross swords mark, incised figures and letters, 15cm high £200-300
		18	A pair of Japanese Satsuma vases, of waisted form, decorated in the round in typical style on red ochre ground, early 20th century, four character marks to base, 33cm high £80-100

- Lot No Description
- 19 A late 19th/early 20th century Chinese Bowl of scalloped circular form, blue and white, decorated externally with Holy Men among bamboo, internally with flowering vine, 29.5cm diameter £80-120
- 20 A 19th century Chinese Ginger Jar of typical form, decorated in underglaze blue with a landscape of bamboo, prunus bushes and trees, pierced hardwood cover, pierced hardwood stand supported on five feet, 32cm high overall £100-150
- 21 A Crown Staffordshire Wildfowl by Peter Scott, limited edition model of a Pintail Duck, 1974, number 150 of 250, on wooden plinth, 32cm long £30-50
- 22 A Crown Staffordshire Wildfowl by Peter Scott, limited edition model Mallard, 1975, number 150 of 250, on wooden plinth, 28cm high £30-50
- 23 A Crown Staffordshire Wildfowl by Peter Scott, limited edition model The Shoveller, 1977, number 150 of 250 on wooden plinth, 33cm long £30-50
- 24 A Crown Staffordshire Wildfowl by Peter Scott, limited edition model Shellduck, 1978, number 150 of 250 on wooden plinth, 28cm high £30-50
- 25 A Crown Staffordshire Wildfowl by Peter Scott, limited edition model European Green Winged Teal, 1979, number 150 of 250 £30-50
- 26 A Crown Staffordshire Wildfowl by Peter Scott, limited edition model The Pochard, 1982, number 150 of 250 on wooden plinth, 29cm long £30-50
- 27 A Crown Staffordshire Wildfowl by Peter Scott, limited edition model Ruddy Duck, 1985, number 150 of 250 on wooden plinth, 30cm long £30-50

- Lot No Description
- 28 A French Table Refraichissoir, by Martin Benito, the twin handled globe shape crystal glass and gilt metal mounted centrepiece with hinged pineapple knopped lid, internally having a support for eight crystal glasses within an ice holder, supported on a gilt metal square plinth with four dolphins, 50cm high £150-250



Lot No Description

29 A set of six late 19th century Cordial/Liqueur Glasses by Moser, gilt decorated faceted body, cobalt blue enamelled cabochons, rim gilded internally and externally on shaped foot, one glass snapped at the foot £50-100

30 A late 19th century Spill Vase by Moser, tapering hexagonal shape, each panel reserved with an amber enamelled cabochon, applied gilt scroll and lattice work to all sides, 18.5cm high £50-100

31 A pair of Venetian glass Pedestal Ewers of typical form with ribbed loop handle terminating in a mask, applied pink thread to spout, handle, girdle and foot, 33cm high £150-200



31

32 A set of three Venetian Wine Glasses, swirled U shape body, spiral twist stem with applied red gold scrollwork on circular swirl foot with red gold edge, 17cm high £45-60

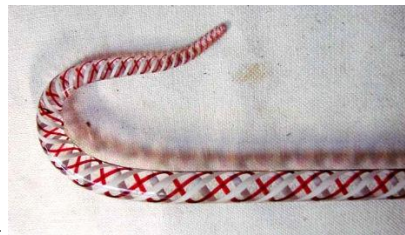
33 A Venetian glass Tazza, of circular form, the swirled bowl centrally set with a pink flower stem, threaded internally to support a display of three flower heads and scrollwork, swirling baluster shape stem on swirled circular foot, the whole highlighted in pink and red gold, 34cm high £80-120

Lot No Description



33

34 A Victorian glass Frigger in the form of a shepherd crook, clear glass with internal white and red spiral thread, pointed tip, 187cm £50-80



34

Curios, Collectables & Objects

35 A set of three Edwardian ivory Billiard Balls, two white, one red £50-80

36 An oriental bone Walking Cane in thirteen carved sections with applied characters and stylised foliage, crown shaped pommel with white metal mount, 85cm long £40-60

36A An ivory Desk Seal modelled as the bust, possibly of a Roman Emperor with white metal intaglio base bearing initials SE, 11cm high £80-120

Note: we will not ship ivory to the USA




36A

- | <u>Lot No</u> | <u>Description</u> |
|---------------|---|
| 37 | Military Interest, a trench art Walking Stick made of nine brass shell cases from a Spitfire, 88cm long £40-60 |
| 38 | A German Third Reich enlisted man's Hower, clip point steel blade with narrow fullers, inscribed Arbeit Adelt, makers logo for F.W HÖLLER Solingen within an oval, silver plated hilt with two piece antler grip, black enamelled steel scabbard with plated mounts featuring Celtic Knotwork decoration and Swastika, 38cm long £200-300 |
| 39 | W & J Graham & Co., Vintage Port Wine, finest reserve 1960, one bottle, level to shoulder, label torn and holed £40-50 |
| 40 | Vintage Port, one unopened case of twelve bottles Offley Boa Vista 1983 £200-300 |
| 41 | An early 19th century birds eye maple Tea Caddy of rectangular waisted form, hinged pagoda style lid, mother of pearl escutcheon, internally fitted with a pair of hinged lidded tea boxes and a central mixing bowl well (no bowl), 35cm long by 20cm wide by 19cm high £100-120 |
| 42 | An early 19th century burr walnut Writing Box, sloping rectangular form of small proportions, the double hinged top inlaid with marquetry decoration as butterflies amongst flowers within a stylised cross banded border, opens to reveal a pen tray and ink well recesses to the back and a silk writing slope to the front with stationery space beneath, 30cm long by 23cm wide £80-120 |



41

- | <u>Lot No</u> | <u>Description</u> |
|---------------|---|
| 42 |  |
| 43 | Three reference books relating to Antique Ceramics including P D Gordon Pugh, Staffordshire Portrait Figures 1992, John and Griselda Lewis Pratt Ware 1780-1840, 1993, Pat Halfpenny, English Earthenware Figures 1740-1840, 1991(3) £30-40 |
| 44 | A bronze model depicting a Lion guarding a Wild Pig, unsigned, on veined marble rectangular plinth, circa 1900, 23cm high £200-300 |



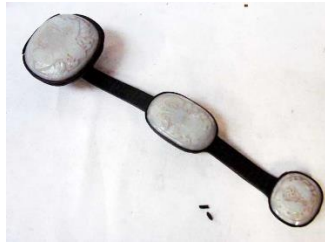
44

- | | |
|----|--|
| 45 | Sir William Hamo Thornycroft R.A (1850-1925), a patinated bronze figure of John Bright (1811-1889), the Quaker and liberal Statesman, signed and dated 1891, inscription to reverse of base reads Published by Arthur Leslie Collie 39B Old Bond Street London September 10th 1891, 36cm high £2000-3000 |
|----|--|



45

- Lot No Description
- 46 Austin Sculpture, a 20th century Art Deco style bronzed figure of seated female nude on rocks within crescent moon, 52cm high £30-50
- 47 Austin Sculpture, a 20th century Art Deco style bronzed figure of a female nude, leaning backwards, signed Danel, entitled Luxurious, 63cm high £30-50
- 48 An Antique Chinese hardwood and carved jade Ruyi Sceptre, the jade panels relief carved with fish, elephant, plant in urn, swastika and other devices, the hardwood arms inlaid with text, end panels require re-fixing, 49cm long £100-200



48

- 49 Six Chinese carved jade/hardstone Hooks as dragons 7.5cm - 17cm £30-40
- 50 Four Chinese carved jade/hardstone Musicians and a Phoenix 9cm - 19cm £40-50
- 51 Five Chinese carved jade/hardstone Hair Pins, 12cm - 29cm £30-40
- 52 Seven Chinese carved jade/hardstone Figures, 6cm - 9cm £40-50
- 53 A pair of Chinese carved jade/hardstone Totems, 22cm £30-50



53

- Lot No Description
- 54 Two Chinese carved jade/hardstone Hooks as dragons, 32cm £30-40
- 55 Ten Chinese carved jade/hardstone Pendants, 4cm - 6cm £30-40
- 56 Four Chinese carved jade/hardstone Fertility Symbols, 8cm - 19cm £40-60
- 57 Three Chinese carved jade/hardstone Horses and two Horse Heads, 7cm - 9cm high £30-50



57

- 58 A Chinese carved jade/hardstone two-handed Incense Bowl, 18.5cm long £30-40
- 59 A pair of Chinese carved jade rectangular Paperweights decorated with dragons, 18cm long £30-40
- 60 A pair of Chinese carved jade/hardstone Paperweights, low relief decoration of lotus flower, 14cm £30-40
- 61 A Chinese carved jade/hardstone Paperweight as five seated frogs, 15.5cm long £30-40
- 62 A Chinese carved jade/hardstone Brush Washer, bamboo decoration, 8.5cm £30-40



62

- 63 A pair of Chinese carved jade/hardstone Horses, 13cm high £30-50

Lot No Description

64 A Chinese carved jade/hardstone sculpture of a Pixu with Devil on its back, 16cm high £40-60



64

65 Two Chinese carved jade/hardstone Statues, one as a Holy Man the other as a Lion on a Bull, 12cm - 18cm high £40-60

66 Three Chinese carved jade/hardstone Figures, 13cm - 20cm high £40-60

Juvenalia & Collectable Toys

67 A Doll's House as Margarets Tea Room with a comprehensive selection of furnishings and fittings, 33cm high by 35cm wide by 29cm deep £120-150

List of fittings & furniture available

68 A four storey Dolls House comprehensively furnished to every room, illuminated and very detailed £200-400

List of fittings & furniture available



68

Lot No Description

69 Harrods Christmas Teddy Bears, large and small for years 1998, 1999 and 2000 (6) £60-90

70 Harrods Christmas Teddy Bears, large and small for years 2001, 2002 and 2003 (6) £60-90

71 Harrods Christmas Teddy Bears, large and small for years 2004, 2005 and 2006 (6) £60-90



71

72 Harrods large Teddy Bears, 1849-1999 150th Anniversary Bear, 100 Years Teddy Anniversary and Millennium 2000 Bear (3) £40-60

73 A collection of Teddy Bears, Harrods mother and baby, Harrods small bear, Harrods large bear, Harrods Christmas Bears 1996 and 1997, Fraser bear 2003 and Russ McMurphy St Patrick's Day (8) £60-100

75 Harrods Special Edition Teddies Presentation Set 1986 to 1995 in original presentation drum minus 1993 Panda (9) £40-60



75

- | Lot No | Description |
|--------|---|
| 76 | Corgi Classics 31012 Mickey Kiely Boxing Set, 24801 Silcocks Leyland Dodgem Truck and caravan set and 27801 Anderton and Rowland's Atkinson Open Pole Truck Set (3) £50-80 |
| 77 | Corgi Classics 31012 Mickey Kieley Boxing Set, 16502 Pat Collins Scammell Highwayman Ballast with Closed Pole Trailer and Caravan Set and 12601 Silcocks Foden Closed Pole Truck Set (3) £50-80 |
| 78 | Corgi Classics 09901 Pat Collins ERF Dodgem Truck and Box Trailer Set, 27602 Crow's Atkinson 8-wheel Rigid Truck and Trailer with loads, 27801 Anderton and Rowland's Atkinson Open Pole Truck and 06601 Carters Morris 1000 Publicity Van (4) £50-80 |



78

- | | |
|----|--|
| 79 | Corgi Classics 15901 Anderton and Rowland's Scammell Highwayman Generator with Closed Pole Trailer and Dodgem Trailer, 16501 Carters Scammell Highwayman Ballast with Closed Pole Trailer and Caravan, 16101 Crow Scammell Highwayman Crane and 06601 Carters Morris 1000 Publicity Van (4) £50-80 |
|----|--|



79

- | Lot No | Description |
|--------|--|
| 80 | Corgi Classics 15901 Anderton and Rowland's Scammell Highwayman Generator with Closed Pole Trailer and Dodgem Trailer, 27602 Crows Atkinson 8-wheel Rigid Truck and Trailer with loads and 21701 John Codona's AEC Closed Pole Truck with Closed Pole Trailer (3) £50-80 |



80

- | | |
|----|--|
| 81 | Corgi Classics 16502 Pat Collins Scammell Highwayman Ballast with Closed Pole Trailer and Caravan, 09901 Pat Collins ERF Dodgem Truck and Box Trailer, 27801 Anderton and Rowland's Atkinson Open Pole Truck and 24401 Codona's Leyland 8-wheel Rigid Truck (4) £40-60 |
| 82 | Corgi Classics 16501 Carters Scammell Highwayman Ballast with Closed Pole Trailer and Caravan, 24801 Silcocks Leyland Dodgem Truck and Caravan, 12601 Silcocks Foden Closed Pole Truck and 16101 Crow Scammell Highwayman Crane (4) £50-80 |



82

- | | |
|----|--|
| 83 | Corgi Classics 21701 John Codona's AEC Closed Pole Truck with Closed Pole Trailer, 14101 Tuby's Foden S21 8-wheel Dodgem Truck, 12601 Silcocks Foden Closed Pole Truck and 24401 Codona's Leyland 8-wheel Rigid Truck (4) £50-80 |
|----|--|

Lot No Description

84 A Comprehensive collection of Triang Ships by Minic Limited, 1:1200 scale water line models, thirty-seven vessels including S.S United States, RMS Canberra, SS Nieuw Amsterdam, RMS Caronia, RMS Arlanza, N.S Savannah, HMS Superb, Port Brisbane, HMS Bulwork, HMS Swiftsure, Royal Yacht Britannia, HMS Daring, HMS Virago, HMS Whitby etc, quayside equipment, breakwaters, quay straights, storage tanks, buildings and ship riggings etc £250-350

85 An Airfix James Bond Special Agent 007 1/24th scale construction kit Aston Martin DB5 circa 1965, original box and drawings and a Revell USS Ranger H.360 construction kit circa 1969, original box and drawings (2) £100-150



85

86 A Corgi Major 1142 Holmes Wrecker Recovery Vehicle with Ford Tilt Cab, boxed - no cellophane and Triang Spot-On set of Road Signs, scale 1/42 in original box (2) £50-50



86

87 A Corgi 497 Man from U.N.C.L.E Gun Firing Thrush-Buster circa 1966 in original box with Waverly Hologram Ring £120-150



87

88 Dinky Supertoys 972 20 ton Lorry Mounted Coles Crane - boxed, 582 Pullmore Car Transporter - boxed and ten Military Vehicles - unboxed £40-60

89 A collection of forty-two Corgi, Dinky and Matchbox diecast model cars and vans, unboxed, playworn £50-80

90 Seventeen Dinky and other diecast model ships and eighteen Matchbox diecast model cars, all unboxed and playworn £30-50

91 Four Triang Minic tinplate commercial Vehicles £50-70



91

92 Dinky Supertoys 954 Fire Station Kit, boxed, unused £200-250

93 Corgi Toys Volvo P1800 The Saint, Corgi Whizzwheels Volvo P1800 The Saint and Corgi Rockets Volvo P1800 The Saint, unboxed (3) £50-80

94 Ten Corgi/Dinky diecast model racing cars 1950's era, unboxed, playworn £30-50

- Lot No Description
- 95 Corgi Toys, Chitty Chitty Bang Bang diecast model with passengers £35-50
- 96 Corgi Toys James Bond Aston Martin DB5, Corgi Toys James Bond Toyota 2000 GT (2) £40-60



96

- 97 Dinky Toys, Paramount 1975 USS Enterprise, Dinky Diecast Toys Klingon Battle Cruiser, boxed (2) £40-60
- 98 Dinky Toys 435 Bedford T.K Tipper, boxed, Leyland Octopus , playworn, Dinky Supertoys Robertsons Golden Shred Guy - repainted (3) £40-60
- 99 Corgi Toys, Batman Batmobile with Glastron Bat Boat on trailer £45-70



99

- 100 Corgi Toys, The Green Hornet's Black Beauty with missiles £40-60



100

- 101 Chad Valley, Schuco copies, three tinsplate cars, including two clockwork and one friction drive Ambulance/Siren (3) £40-60

- Lot No Description

Silver

- 102 An Art Deco silver Cigarette Box of rectangular form, the hinged lid with Greek Key border around an engine turned panel, central cartouche with CHA monogram, Birmingham 1922, 22.24oz total weight £100-150
- 103 An Art Deco blue cased silver mounted Ladies Travelling Set by Mappin and Webb circa 1936, contains silver topped bottles and jars, silver mounted comb, brushes and mirror, scissors, shoehorn and nail file, initialled AMG £150-200



103

- 104 A set of four Victorian two-handled silver Table Salts, London 1890, campana form, the body with twist decoration and embossed panels of flower heads, the handles as winged mythical beasts, supported on foliate engraved circular bases, 7.35oz, 9cm across £100-150
- 105 A late Victorian pierced silver Bon Bon Dish of shaped hexagonal form embossed with foliage scrolls and bows, on pierced four footed base, London 1893, 3.47oz, 12cm wide £40-60
- 106 A George IV silver Salt of compressed oval form, gadrooned rim, repoussé decorated with fruited foliage set on four shell and pad feet, London 1825, 4.88oz, 13cm long £50-80

Lot No Description



106

107 A late 18th century George III silver Jug of helmet shape with reeded loop handle on circular stem with spreading foot fixed to a square base, London 1788, 4.03oz, 17cm high £50-80

108 A pair of late 19th century Silver Beakers of U shape, inscribed with Neilson family crest Corsock Wigtonshire, given as prizes Liverpool Polo Club Races 1890 and 1891, 4.89oz 6cm high £50-80

109 A George III small lidded silver Claret Jug of typical urnular form, the hinged lid with urn shape knob, embossed body with scrolling foliage on spreading circular foot, basket bound loop handle, London 1802, 14.44oz total weight, 23cm high £120-150

110 A pair of late Victorian silver Chocolate Pots, pear shape with knopped covers, swirl fluted decoration to cover and lower section of the body, reserved with Griffin crest, ebonised handles, London 1882, 12.04oz total weight, 13cm high £120-150



110

111 An early 20th century silver Tray of circular form, pierced edge and reeded rim, supported on three pierced feet, London 1909, 30.52oz, 31cm diameter £250-350

Lot No Description

112 A large pair of Edwardian silver Chocolate Pots of tapering cylindrical form, dome shape hinged covers with urn knob and thumb pull, reeded circular base, wooden scroll handle, London 1907, 26.65oz and 24.39oz, 24.5cm high £400-500



112

113 A cut glass Perfume Atomiser, pear shape with silver and engine turned blue enamel top, pump action, 13cm high, together with a matching seven piece Dressing Table Set consisting of two hair brushes, a pair of clothes brushes, a hand mirror, a glass bodied powder jar and a silver bodied powder box (8) £100-200



113

114 An Art deco silver four-piece Tea Service of canted rectangular form, comprising, tea pot, water jug, twin handle sucrier and cream jug, James Dixon and Son, Sheffield 1923, 51.58oz total weight £450-500

115 A silver and mesh continental Evening Bag, the rectangular mount bearing import marks, P.E. London 1923, carry chain 13.69oz £90-120

- Lot No Description
- 116 A set of six Russian 84 silver cloisonne enamel Spoons, bowl backs decorated with scrolling foli, twist handles with enamelled terminals, 10.3cm long £250-300



116

- 117 A Russian silver niello work Snuff Box, mid 19th century, rectangular form with gilt interior, marked 84, HM, 1867, the hinged lid reserved with a cartouche inscribed John Patterson Bolton, 6.5cm wide, niello work heavily rubbed £80-120

Jewellery, Gold & Watches

- 118 A white metal Pendant Locket, hinged to side, decorated in Champlévé enamels with two headed mythical bird and birds with flags, possibly Garbett Family Crest, suspension loop and chain, 5.5cm by 4cm £100-150

Note: Major Garbett is mentioned lower left in Storming of the Mooltan print, Lot 129



118

- 119 Liverpool Agricultural Society Instituted 1830, 1848 Exhibitors Medal, possibly silver, 1.15oz, 5cm diameter £30-40

- Lot No Description
- 120 A small collection of five Masonic Jewels, Limestone Rock Lodge No 369 including two oval silver gilt and blue enamel cushion shape pendants, a silver gilt square pendant on ribbon and two other enamelled pendants on ribbons £70-100

- 121 A 19th century Continental Mourning Pendant, oval form in gilt metal, decorated in micro mosaic with an exotic bird amongst foli within a flower head border, suspension loop and black ribbon £90-120



121

- 122 Burnley Civic Interest, an early 20th century 9ct gold Presentation Key, bearing Burnley coat of arms, inscribed verso B.C.E.D Sub Station Opened March 4th 1916, Presented to Mrs J. Thornber, 25.5g total weight, in fitted case £300-500



122

Lot No Description

123 A 14k gold cased Ladies Fob Watch, half hunter case with blue Roman numerals, white face with Roman numerals, suspension ring marked 14k, 28.8g £80-120



123

124 An 18k gold cased ladies open face Fob Watch, top winder, gilt dial with Roman numerals and foliate engraved centre, foliate engraved case and cover, 36g total weight £150-200



124

125 A 1950's Garrard Vintage Gentleman's Wrist Watch, mechanical wind, 27mm silvered dial with Arabic numerals, subsidiary seconds dial at 6, inscribed Garrard Swiss Made, presentation inscription to back cover, later steel expanding strap, original box & guarantee £80-100

126 An Omega 9ct gold cased Gentleman's Vintage Wrist Watch, mechanical wind silvered dial with Arabic numerals at even numbers, subsidiary seconds dial at 6, recent non Omega tan leather strap, original presentation case £100-150

Lot No Description



126

127 A 9ct gold and mesh continental Evening Bag, the clasp set with a pair of sapphire coloured stones, the rectangular mount bearing import marks, London 1920, oval link carry chain, 234.1g and a small gilt mesh purse 27.5g (2) £1500-2000



127

128 An 18ct yellow & white gold diamond Cluster Ring, centrally with an arrangement of baguette cut diamonds within a border of round brilliants, white claw setting, yellow tapered shoulder shank, approximately 4.5ct total diamond weight, finger size N £4000-5000



128

Lot No Description

Prints & Paintings

129 After Henry Martens, The Storming of Mooltan January 2nd 1849, mid 19th century Aquatint by J Harris, published by Rudolph Ackermann 1851. 48cm by 59cm £150-200

See note on Lot 118



129

130 After Cecil Aldin, the Chess Game, and the Card Game, a pair of coloured lithographs, pencil signed to margin, published by Lawrence and Bullen 1901, 37cm by 60cm (a pair) £170-200

131 Albert Haselgrave (British 19th century), Figures and Horses on a Country Lane and another Horses in a Ford, signed pair of watercolours, 37cm by 62cm (2) £70-100

132 Albert Dunnington (1860-1928), Lake Scene with Figure in a Rowing Boat, signed watercolour dated 1916, 25cm by 35cm £50-100

133 Albert Dunnington (1860-1928), Shepherd and Sheep on a Country Lane, signed watercolour dated 1916, 34cm by 25cm £50-100



133

Lot No Description

134 John Yates (185-1969), The River Ribble near Dinkley, signed pastel, 31cm by 38cm £40-60

135 F Pearson (British 19th/20th century), Near Godalming, signed watercolour and Near Penhurst Kent, each 29cm by 49cm, a pair £40-80

136 C J Keates (19th/20th century), Continental Street Scene, signed watercolour, 32cm by 50cm £150-200

137 Ashley Jackson (British b.1940), On a Skyline, watercolour, signed and dated 1981, 35cm by 53cm £180-250



137

138 Georges Pierre Guinegault (French 20th century), study of a young female nude asleep on a bed, oil on canvas signed Georges Guinegault, 39cm by 79cm £150-250



138

139 Continental School, still life of flowers in a vase, oil on canvas, unsigned in gilt & gesso frame, 59cm by 47cm £80-120

140 Manner of Edgar Hunt, Barn interior with poultry and dog in a manger, signed E Hunt, 34cm by 29cm £200-300

Lot No Description

141 Gudrun Sibbons (b.1925), Dutch River Landscape with figures, fishing boat, cottage and windmill, oil on panel, signed, 26cm by 41cm £300-400



141

142 Gudrun Sibbons (b.1925), Dutch River Landscape with fishing boat at low tide, oil on canvas, signed, 34cm by 52cm £400-500



142

Lot No Description

144 An Edwardian golden oak Horseshoe Mirror set with eight large brass square head nails as hat and coat hangers, around the frame, 102cm high by 76cm wide £100-200



144

145 An Edwardian golden oak Horseshoe Mirror set with eight large brass square head nails as hat and coat hangers, around the frame, 102cm high by 76cm wide £100-200



145

Interior Decoration & Furnishings

143 A 19th century Chinese Silk Wall Hanging, decorated in coloured threads with three circular panels depicting Dragon and Flaming Pearl, interspaced with panels depicting Crane amongst foliage, on red ochre ground, highlighted in gold thread within a three sided border of silver and gold embroidered foliage on dark blue ground, multi coloured fringe of thread tassels to bottom edge, 240cm long by 79cm wide £100-200

144 A Victorian oak cased circular dial Polytechnic Barometer Thermometer by Joseph Davies and Company with paper dial and Admiral Fitzroy instructions, storm warning signals, 105cm high £100-150

146 An early 20th century oak Longcase Clock, arch top, silvered circular dial with Arabic numerals, glazed door enclosing three train triple weight movement, striking on rods, 194cm high £100-200

147 A George III oak and mahogany Longcase Clock, eight day movement on painted arched face with rolling moon phase inscribed Geo Slater Burslem, Roman numerals, subsidiary seconds dial and calendar, inlaid mahogany hood with swan neck pediment, turned pilasters, oak trunk with shell inlaid door flanked by turned pilasters, canted box base, 228cm high £250-350

- | <u>Lot No</u> | <u>Description</u> |
|---------------|---|
| 148 | A Victorian mahogany Rocking Cradle, caned hood and sides, centrally supported on a cheval style stand incorporating turned block supports and stretchers, set on four bun feet £150-200 |
| 149 | A reproduction Georgian style oak low Chest on Stand, rectangular top with moulded edge above an arrangement of three drawers supported on a removable stand with four square section cabriole legs, 94cm wide by 50cm deep by 90cm high £100-150 |
| 150 | A 17th century oak Wainscot Armchair, the crest rail with broken arch centred with a sunburst, carved panel back with feature arch and columns, down swept arms on turned supports, solid seat with fixed shallow cushion, raised on turned block supports with perimeter stretcher, 108cm high £800-1200 |
| 151 | A good quality Jacobean style oak Refectory Table, rectangular top with draw leaves, carved frieze on four heavy carved cup and cover legs with interspacing stretchers and square block feet, 213cm long (305 open) by 91cm wide by 75cm high £200-300 |
| 152 | A good quality set of eight Jacobean style oak Dining Chairs, studded leather back and seat, turned block legs, plain double side and rear stretchers, turned front stretcher, includes a pair of carvers £200-300 |
| 153 | A late Victorian mahogany Display Cabinet, the raised top with pierced shell crest, applied acanthus scrolls and plinths around bevelled mirror panels, glazed three panel lower display cabinet with applied mouldings, internally shaped and fabric top shelves in front of mirror panels, supported on square taper legs interspaced by a moulded serpentine shelf, 237cm high by 140cm wide by 48cm deep £400-500 |



150



151



152



153