

Silverwoods of Lancashire

August Sale On Thursday 25th August 2016 at 10.00am

at the Silverwoods Auction Room
Clitheroe Auction Mart
Lincoln Way
Clitheroe, Lancashire, BB7 1QD

Viewing Times

Tuesday 23rd 4.00pm – 6.30pm
Wednesday 24th 10am – 2pm
Thursday 25th from 8.30am to start of sale
Or by appointment
Sale Starts at 10am

Tel: 01200 423322 Fax: 01200 429263
Buyers Premium – 18% (including VAT)

Entries are invited on every Monday between
9am – 3pm
Other times available by appointment
Please contact Wilf Mould

Lot No Description

Ceramics & Glass

1 A Moorcroft pottery vase of tall circular tapering form, tubeline decorated in clematis design on a deep blue ground, 31cm high by 15.5cm diameter, impressed marks and blue facsimile signature
£120-180

2 A Moorcroft pottery biscuit barrel, ovoid form with plated mount, loop handle and lid, tubeline decorated in the pomegranate design, impressed mark and green facsimile signature, 24cm high including handle
£100-150



2

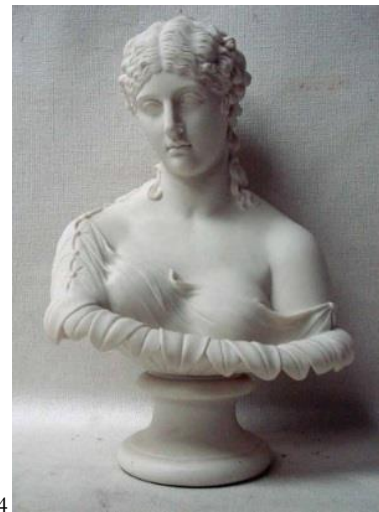
3 A mid-19th century Cobridge Ranger stoneware hunting jug by Edward Walley, moulded with scene of a huntsman with dogs and shotgun and opposing panel depicting two figures with horse and dogs, grapevine handle, applied lozenge to base, dated 10th May 1845, 23cm high and a pair of similar stoneware hunting mugs with moulded hunt scene and hound handle, 12cm high (3) £40-60

Lot No Description



3

4 A Copeland style white parian ware bust of a young woman raised on socle base, 30cm high £50-80



4

5 A pair of 19th century Staffordshire King Charles Spaniels, semi frit bodies, seated, one with repaired front leg, 25cm high £40-60

6 A large pair of 19th century Staffordshire King Charles Spaniels with painted faces and glass eyes, seated, 32cm high £30-50



6

- Lot No Description
- 7 A pair of 19th century Staffordshire flatback figures as a Scottish Huntsman holding his rifle and his lady with rifle and attentive hound, 32cm high and a pair of Staffordshire style inkwells modelled as recumbent greyhounds, 17cm long (4) £50-80
- 8 A pair of Staffordshire pottery military figures, Kitchener and Roberts, white with gilt highlighting, 36cm high £50-80



8

- 9 An early 19th century Bloor Derby porcelain twelve-piece coffee service comprising six coffee cans and six saucers decorated with panels of rose buds, a pair of matching tea cups and saucers and a pair of egg cups (18), red printed mark circa 1830 £80-120
- 10 A Meissen style jardinière in the form of a hydrangea flower head supported by a pair of prone cherubs, 22cm high and a Meissen style jardinière, the pierced bow encrusted with rose blooms supported by three cherubs on a circular naturalistic base, 19cm high, both marked with blue cross swords (2) £40-60

- Lot No Description
- 11 A pair of Japanese Imari chargers, circular scallop edge with central panel decorated with a vase of flowers bordered by three panels of blossoming branches interspaced by blue panels of stylised foliage 30cm diameter £40-50
- 12 A pair of continental glazed porcelain sculptural models of ruffed grouse on naturalistic bases, the tallest 22cm high, a small model of a wren and a coal tit (4) £40-60



12

- 13 Karl Ens, a glazed porcelain sculptural model of a thrush, number 7574, 26cm high, beak repaired and a lesser spotted woodpecker, number 7681, 24cm high (2) £50-80



13

- Lot No Description
- 14 Karl Ens, a glazed porcelain sculptural model of a jay, number 7098, 18cm high, a pair of kingfishers, number 7521, 13cm high, a grey wagtail, number 7489, 11cm high and a yellow wagtail, 13.5cm high (4) £40-60
- 15 Karn Ens, a glazed porcelain sculptural model of a pair of chaffinches, 16.5cm high, a bullfinch, 13cm high, a nuthatch, 12cm high and a young blue tit, 7cm high (4) £30-40



15

- 16 An English wrythen glass with small collar and thicker foot, second half 18th century, 13.5cm high; 1 rib twisted English ale glass, late 18th century, small nibble to rim, thicker foot, 13cm high (A/F) and an English ale glass, rib twisted three-quarter decorated, small knop, thicker foot, second half 18th century, height 15cm (3) £50-60



16

- Lot No Description
- 17 A heavy metal glass with drawn bowl, tear in stem, thicker foot, first half 18th century, 16cm; a plain Hogarth style glass with solid foot, probably a punch glass, approximately 1740, 7.5cm high, slight slag marks; a Rummer of fine clear glass, with collar plain foot, late 18th century, 13cm high; a Rummer, clear glass with collar and lemon squeeze foot, mid-18th century, 13cm high, and a straight sided glass, bowl of heavy metal drawn, short stem and smaller base, 12cm high, late 18th century (5) £80-120



17

- 18 A tall mid-18th century wine glass, drawn type into a thistle shaped bowl, clear stem, heavy foot, 16.5cm high; a late 18th century funnel shaped bowl of the drawn type, solid household or tavern glass, foot has two small nibbles, 11.5cm; a trumpet shaped bowl, small double collar, bowl engraved TA, slight illusion with slag marks and very slight nibble to foot, 10.5cm and a clear heavy metal, illusion glass, toast master's glass or shot glass 11cm, double collar with heavy base (4) £60-90

- | <u>Lot No</u> | <u>Description</u> |
|---------------|---|
| 19 | An 18th century cordial glass, compound white twist stem, ogee bowl, plain domed foot, 14cm high; another compound white twist stem, ogee bowl, plain domed foot, second half 18th century, 14cm high; another compound white twist stem, slight bell shaped bowl, plain foot, small amounts of slag marks to foot, tiny nibble, second half 18th century, 15cm high and another (A/F) as above with three nibbles on foot and air bubble in glass, 15cm high (4) £80-120 |
| 20 | An 18th century wine glass, bell shape drawn bowl, twisted clear stem, heavy foot, 16.5cm high; a small 18th century wine glass, compound, white twist stem with drawn bowl, heavy foot with nibble and some slag spots, 12.5cm high and an 18th century cordial glass, ogee bowl, clear stem, folded foot, 14cm high (3) £50-80 |
| 21 | A commemorative 19th century English lead crystal tumbler, straight sided with a heavy base of ecclesiastical design. This glass has an illustrious history, in the base is a silver cabochon inscribed with the words 'part of the communion plate from the York Minster, burnt 1829'. The fire was started by one Jonathan Martin claiming to have a grievance against the 'goings on' in the Minster, he decided to burn it down. The tumbler has been designed and cut in such a way that enhances the religious connotations, with Gothic arches and sunburst orbs. 14cm high £40-60 |

<u>Lot No</u>	<u>Description</u>
---------------	--------------------



21

- | | |
|----|--|
| 22 | A pair of 19th century heavy based straight sided engraved English lead crystal tumblers, both have engravings, on engraved Joseph Moas (or Mogs) August 1852. The engraving on this tumbler is of Robin Hood with bow and Little John with stave, the pair inscribed Sally Moas (or Mogs) August 1852. The engraving on this tumbler is that of the S.S. Sarah Sands, however the engraved names on both tumblers could have been executed at a later date, 11cm high (it is assumed they are a marriage pair) £60-90 |
|----|--|

Note: the saga of the Ship Sarah Sands is a fascinating story from the 11/12th November 1857 - one that is still remembered today by the 54th Foot now known as The Devonshire and Dorset Regiment as one of their finest non-fighting heroics



22

Lot No Description

23 A Georgian glass tankard of baluster form with triple ribbed rim, crimped loop handle with folded tail and flared foot, 14cm high; an early 19th century lead glass tumbler of tapering form heavily engraved with a bucolic scene depicting harvest and milking time, initialled SE, 11.5cm high and an 18th century English lead glass Rummer of typical form, engraved with vine and grapes to rim, wrythen body and stem, spreading foot, 12cm high (3) £80-120

24 A collection of five Prattware pot lids, one with jar, Wolf and Lamb, Persuasion, Village Wedding, Consent and Rock Fishing, 103cm diameter (5) £80-120

25 A collection of eleven toothpaste and cold cream jars and lids and two small ointment jars, including Atkinsons, Liptrott & Co., W. Woods, Boots, Holloways, C.R. Coffin, five having jar bases (11) £80-120

Oriental

26 A Chinese carved jade sculpture depicting a mythical dragon dog with a scorpion on its back, 29cm long £80-120



26

Lot No Description

26A A Chinese lacquered wooden geomancers compass, circular with inset central silvered compass surrounded by bands of text and characters, table of Chinese text to underside, late 19th-early 20th century £40-60

27 A collection of four Chinese jade/hardstone Bi, each with pierced decoration featuring dragons and mythical creatures, 8cm-11cm diameter (4) £50-80



27

28 A collection of seven Chinese Hongshan style carved jade/hardstone figures and creatures, 6cm-9.5cm (7) £50-80

29 A collection of three Chinese carved jade Ruyi or love tokens, 11cm-24cm long (3) £50-80



29

30 A collection of six Chinese jade/hardstone Bi, each with pierced decoration featuring figures and mythical creatures, 6.5cm-13cm long (6) £50-80

Lot No Description

31 A collection of nine Chinese jade/hardstone Funerary figures including a tortoise 3.5cm and figures up to 16.5cm high, Xian Province (9) £80-120



31

32 A collection of eight Chinese jade/hardstone Funerary figures including a holy man, hippo, rabbit, goat, horse and others, 5cm-7cm long (8) £50-80

33 A collection of seven Chinese jade/hardstone Funerary figures including Buddha bust, seated Buddha, tortoise, hippo and others 4.5cm-9cm (7) £50-80

34 A collection of five Chinese jade/hardstone fertility tokens and ornaments, 8cm-16cm long (5) £50-100



34

35 A Chinese celadon jade carved model of a standing cockerel 13cm high on a carved hardwood stand £200-300

Lot No Description



35

36 A Tibetan bronze prayer bell of tapering oval form, a band of cats and calligraphic text around the body, 29cm high, suspending internally a smaller plain bell 12cm high and a smaller bell 5cm high £80-120



36

37 A Chinese ivory and silk Brise fan, the pierced guards and sticks supporting a foliate designed silk, 66cm wide (open) £70-100



37

Lot No Description

Musical Instruments, Wines & Collectables

38 George Bernard Shaw, a hand written short letter to Mrs Fielding, dated 29th November 1939, signed G Barnard Shaw, printed address 4 Whitehall Court London SW1, 11cm by 8.5cm, pasted to card under glass in faux bamboo brass frame £150-200

39 A late 19th/early 20th century violin bow of typical form with carved ivory frog and tension screw and mother of pearl Paris eye inlay, unnamed, 74cm long £50-80

39A Harp by Sebastian Erard, in satinwood with gilt Grecian decoration above a fluted column on base with gilt Grecian decoration, forty-three strings and eight pedals. Plaque reads 'Sebastian Erard, harp & piano forte maker in ordinary to her Majesty and the Royal Family' and 'Patent No. 5027 18 Great Marlborough St., London', 170cm high (A/F) £1000-1500



39A

Lot No Description

40 A Lachenal concertina of typical hexagonal form with wooden fretwork ends, thirty-one ivory buttons, number 197620, in original faux hide bound pine box £200-300



40

41 A Victorian brass polished brass doorstop as a lion rampant, 35cm high £40-60

42 An early Victorian rosewood ladies travelling box, the hinged cover with mother of pearl inlaid cartouche opens to reveal a fabric back mirror and a stationery pouch, removable tray with three silver lidded glass boxes and a pair of similar glass jars and lift out manicure pad with space beneath, five silver lidded glass jars to rear, push button frieze drawer with necessaire compartments, blue velour and silk linings to interior, 30cm long by 17.5cm high by 23cm deep £250-400

Lot No Description

43 A 19th century black marble and gilt metal model of a classical style mausoleum of square temple form, the dome top surmounted by an urn with urnular finials at each corner, supported on four fluted Corinthian style columns around a bust of a woman set on a square base with relief decorated frieze panels back and front, all on brass brackets, 31cm high £60-100



43

44 A Russian bronze sculpture depicting the heads of Karl Marx and Vladimir Lenin facing right, 40cm long on wooden plinth £180-250



44

44A A collection of souvenir Mauchline ware and other treen items to include string holder, lidded vessels, cup holder, spectacle cases, page turners and others (18) £80-100

Lot No Description

44B A collection of ten Mauchline and other treen ware souvenir boxes with named views (10) £70-100



44B

44C A collection of ten Mauchline and other treen ware souvenir boxes with named views (10) £70-100

45 A pair of early 19th century polychrome painted pine dummy boards as a lady and her suiter, both in 17th century attire, he serenading her with a lute, 118cm high, marks and scratches, she is missing a hand, he part of a finger, sword tip and part of hat brim £500-700



45

46 Three early 20th century Sailor's Love Tokens as dioramas featuring maritime coastal scenes with seaweed and shells behind domed glass, set in shell encrusted frames, one circular 27cm diameter, one square 28cm and a small rectangular example, 18cm by 12.5cm (3) £100-150

Lot No Description

47 Vintage wine: Chateau Grand-Puy Ducasse Pauillac 1983 12/4% vol, Chateau Pibran Pauillac 1985 12% vol, Chateau D'Issan Margaux 1988 12.5% vol, Clos Du Moulin Medoc 1986 12% vol, Chateau Aney Haut Medoc 1982 and Lafite Barons de Rothchild Reserve Spéciale Bordeaux 1998 12.5% vol (6 bottles) £120-180

48 Vintage wine: Chateau Monroze Cruse Bordeaux 1966 3 bottles, Chateau du Raully Bergerac 1973 2 bottles, Chateau Lèon Premieres Côtes de Bordeaux 1997 12% vol 2 bottles (7 bottles) £140-200



48

49 Vintage wine: Chateau Pontet-Canet Pauillac Grand Cru 1995 13% vol, Chateau Laroze St Emilion Grand Cru 1998 13% vol, Chateau Fombrauge St Emilion Grand Cru 1990 12.5% vol 4 bottles (6 bottles) £120-150

50 A Goldscheider gilded terracotta figure of a boy in a fur hat, his hands in jacket pockets, standing against a tree stump, flesh patinated face and hands, green patinated stockings, on square base, signed Cherc, Fabrique en Autriche, moulded seal mark, impressed numbers 1628, 195, 87cm high, chip to underside of shoe £600-800

Lot No Description



50



51 A late 19th/early 20th century large coopered oak wine jug with plated mounts, the hinged cover with urnular finial, plain handle, Bacchanalian mask spout, plated bands with opposing blank shields for presentation inscriptions, circular plated base, 33cm high £50-100



51

Silver & Plated Ware

52 A good quality silver plated coffee pot of urnular form, the hinged lid with urn finial foliate embossed body reserved with opposing cartouches, on plain spreading foot with loop handle, 27cm tall and a matching water jug, 25cm tall (2) £50-80

<u>Lot No</u>	<u>Description</u>	<u>Lot No</u>	<u>Description</u>
53	A good quality pair of silver plated tureens of shaped rectangular form, the covers with detachable handles, reeded and foliate border and rim, 28cm long and a single oval example with detachable handle, gadrooned rim and border, 32cm long (3) £60-90	58	A George V silver capstan inkwell of typical circular form with hinged lid, planished surface, Birmingham 1907, 14cm diameter, a spiral twist silver propelling pencil and matching dip pen, each 15.5cm long and a tapering silver dip pen 19cm long (4) £80-120
54	A good quality early 20th century silver plated soup tureen of typical oval form, the lid with a lion within a circular castellated handle, gadrooned and foliate border, the two-handled bowl with gadrooned rim set on four scrolling foliate feet, 47cm long £50-80	No lot 59	
		60	An Elizabeth II silver plate by Doris Lindner, of dished circular form, commemorating Brigadier Gerard, number 605 of 2000, London 1972, 12.18oz, 23cm diameter with fitted box and certificate £80-120
54		61	An Elizabeth II silver salver of shaped circular form on three acanthus scroll feet, Birmingham 1962, 28.39oz, 33.5cm diameter £200-300
55	An Elizabeth II silver bound cigarette box of rectangular form with canted sides, hinged lid enclosing wooden interior, four beaded edge feet, Birmingham 1958, inscribed with monogram, 16.5cm by 10cm £100-150		
56	A silver cream jug of compressed octagonal form, 3.18oz, 10cm long and a silver mounted cut glass marmalade jar of circular form with removable lid and integral wire work spoon holder and associated spoon (2) £40-60	62	A late Victorian pierced silver cake bowl of shaped oval form, embossed with scrolls and foliage, Birmingham 1896, 8.53oz, 28cm long £60-80
57	A George III silver serving fork for William Bateman London 1800, 31cm long, 4.82oz £40-60	63	A good quality cased set of late Victorian silver tea spoons by Walker and Hall, Kings Pattern, in fitted case, 12.64oz, Sheffield 1897 £80-120

Lot No Description



63

64 A late Victorian cased four-piece silver salt set of gadrooned rectangular form, blue glass liners, one damaged, no spoons, in fitted octagonal box, Birmingham 1896, 4.22oz £30-50

65 An Edwardian easel table mirror of rectangular form with bevelled glass plate in fabric back frame with intricately pierced and silver repousse decorated silver mount, monogram to cartouche, Birmingham 1902 £100-150



65

No lot 66

67 An early 20th century cased silver twelve-piece condiment set of compressed octagonal form, comprising four salts with blue glass liners, a pair of pepperettes, a hinge lidded mustard cellar with blue glass liner and five spoons, Birmingham 1923, 9.88oz retailed by A.A. Appleton of Burnley £80-120

Lot No Description



67

68 A late Victorian silver spirit kettle of typical rectangular form, canted corners, hinged lid and loop handle with ebonised mounts, separate stand with spirit burner, London 1896, 15.12oz total weight £100-150

69 An Edwardian three-piece silver tea service of bowed rectangular form, teapot with hinged lid, reeded rim and edges, ebonised knob and handle on ball feet, London 1905 £200-250

70 A Victorian silver lidded tankard of circular tapering form, the hinged domed lid with double foliate engraved border, the thumb pull as a begging spaniel, angled handle, foliate engraved spreading circular foot, Birmingham 1866, the body with a presentation inscription Edgworth and District Agricultural Society 1896 Six Couple of Harriers, 24cm high, 19.02oz £120-150

71 A William IV good quality four-piece silver tea service by John Tapley, London 1835, the teapot and water jug with flower finial, flower and foliate rim, leaf capped loop handle, conforming embossed body on foliate feet, 86.20oz and an associated pair of bright cut sugar tongs, 1.47oz (5) £650-750

Lot No Description



71

72 A set of three George III silver decanter labels, curved form with reeded edge and chain, Gin, Rum, Brandy, Joseph Wilmore Birmingham 1811 (3) £50-80

Jewellery, Watches & Clocks

73 A 9ct gold charm bracelet set with seven 9ct gold charms including a Victoria 1900 gold sovereign, joined by a heart shape lock, 33.6g total weight £300-350

74 A 9ct gold charm bracelet with fourteen different charms, 75.8g total weight £500-700



74

75 A 14k gold and diamond ring, the central stone in a raised openwork setting, approximately 0.4ct flanked by a pair of smaller stones approximately 0.15ct, the shoulders set with three small stones, ring size M1/2 £400-500

Lot No Description

76 A platinum and diamond solitaire ring, the brilliant cut stone approximately 0.6 carat in 8 claw setting, ring size N £350-400

77 An impressive 18ct gold, platinum and diamond solitaire ring, the brilliant cut stone, VS1, colour approximately K, approximately 2.0ct, flanked by rectangular baguettes to shoulders, eight claw openwork setting, ring size Q 1/2 £2500-3500

78 A vintage gentleman's Omega Seamaster Electronic Chronometer F300 Hz, stainless steel with conforming bracelet, silvered dial with baton numerals, centre seconds date aperture at 3, currently not working £80-150



76



77



78

Lot No Description

79 A Rolex Oyster Perpetual Automatic wrist watch, circa 1950, stainless steel, champagne dial with dagger batons centre seconds and outer seconds track, inscribed officially Certified Chronometer, later Fixoflex expandable bracelet £500-800

80 An 18ct gold cased gentleman's open face pocket watch, the two part white dial with Roman numerals inside a seconds ring, centre seconds hand, top winding repeater movement number 14068, hinged case cover and dust cover both hallmarked, 4.5cm dial diameter, 122g £400-600



79



80

81 A 19th century French mantel clock, Louis XVI style, gilt and ormolu with painted porcelain dial with Roman numerals, signed Bourdin a Paris, chiming movement within a drum shape case surmounted by doves and laurel wreath, supported on slender columns set on a stepped base, later glass dome on wooden plinth, 39cm high, clock only £180-250

Lot No Description

82 A 19th century mantel clock, the rectangular blush ivory porcelain panel set with Arabic numerated dial, similar side panels, within a gilt and ormolu case surmounted by a flaming urn, acanthus leaf and urn pediment, pilaster corners, on a cast rectangular base, striking movement inscribed British United Clock Co Ltd Birmingham, 50cm high £180-250



82

83 A French gilt metal and porcelain clock garniture by Japy Freres & Cie, fruit and blossom filled urn finial hand painted, sevres style porcelain dial and three oval plaques decorated with cherubs and floral swags, eight day movement strikes half hourly on a bell, a pair of conforming gilt and porcelain side urns similarly decorated, clock 43cm high, urns 25cm high £250-350



83

No lot 84

Lot No Description

Pictures

85 After Oliffe Richmond (Australia 1919-1977), three pencil signed limited to 250 edition lithographs, Pilot, 63cm by 50cm, Standing Group, 64.5cm by 51cm and Marathon, 64cm by 41cm (3) £70-100

85A After Sir William Russell Flint, Campo San Trvaso, pencil signed artist proof print with publishers blind stand, 45cm by 60cm £120-180

86 After Newton Fielding (1797-1856), a set of six coloured Aquatints depicting cock fighting, Set Too, Fight, Throat, Knock Down, Recovery, Death, 15cm by 20cm £60-80

87 Geoffrey Key (b.1941), Seated Figure, crayon drawing, signed and dated 1974, bears labels verso, 18.5cm by 12cm £200-300



87

88 Geoffrey Key (b.1941), Nude Couple Dancing, felt pen drawing, signed and dated 1966, 18cm by 14.5cm £200-300

Lot No Description

89 Attributed to Minnie Agnes Cohen (1864-1940), French Market scene, watercolour, signed M Agnes Cohen, 32cm by 38cm £100-200

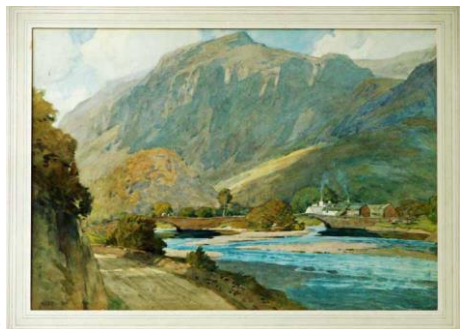


89

90 John W Gough (British 20th century), Friars Walk Ludlow, watercolour, signed, dated (19)82, 26cm by 36cm £50-100

91 Alfred Heaton Cooper (1864-1929), Lakeland Landscape, watercolour, signed A Heaton Cooper, 22cm by 28cm £100-200

92 Alfred Heaton Cooper (1864-1929), Lakeland Landscape, possibly Newby Bridge with river and farmstead, watercolour, signed A Heaton Cooper, 36cm by 52cm £200-300



92

93 R Thornton (British 19th/20th century), Riverside Landscape with Thatched Cottage and Woman in a print, signed 54cm by 89cm £150-250

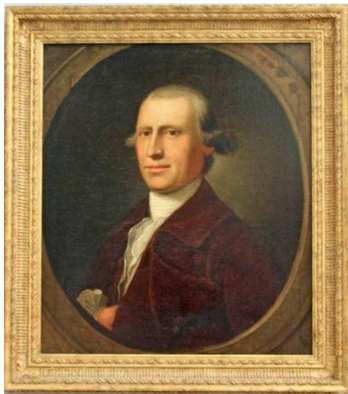
Lot No Description



93

94 Portrait of Isabella, wife of John Waddington, bust length oil on canvas in later gilt frame, 60cm by 73cm £150-250

95 Portrait of John Waddington of Lightcliffe, Yorkshire, bust length portrait, oil on canvas in later gilt frame, 49.5cm by 57cm £150-250



95

96 Portrait of Richard Waddington esq of Bradford & Balks House, Wortley, Yorks, bust length portrait oil on canvas in later gilt frame, 61cm by 73.5cm £150-250



96

Lot No Description

No lots 97-98

99 Oil on board in the manner of Jean Francois Eliaerts, still life of flowers on a marble shelf, 54m by 44cm £800-1000



99

100 Cyril David Johnston (British b.1946), Adult Lanner Falcon, North Africa, Gouache, signed David Johnston 1990, 70cm by 52cm unframed £80-120



100

101 R Marshall (British 19th century), The Harvest, signed oil on board and another by the same hand A Summer Landscape, 30cm by 23cm in oval mounts £100-150

Lot No Description

102 Attributed to Edmund J Niemann
Jnr (1813-1876), Willance Leap,
Swaledale, oil on canvas, 49cm by
29cm £100-200



102

103 Attributed to David Cox (1793-
1859, Traveller on a Wooded Lane,
unsigned oil on panel, 31cm by
23.5cm £100-200

104 After H.R.H the Prince of Wales,
Overlooking Wadi Arkam, Asir
Province, Kingdom of Saudi Arabia,
a pencil signed limited edition
lithograph, 67/100 with certificate,
in blue presentation box, After
H.R.H. Prince Khalid Al-Faisal Al-
Saud, Mountain Sunset 1, Asir
Province Kingdom of Saudi Arabia,
a pencil signed limited edition
lithograph 67/100 with certificate, in
blue presentation box (2) £500-600

Furniture & Garden Items

105 A Chippendale style fretwork
framed wall mirror, the pierced crest
with gilded stylised eagle, shell
inlay to base, bevelled glass, 88cm
by 51cm overall £80-120

106 A Crossley carpet mosaic depicting
Robbie Burns and his Mary outside
a Highland Croft, 68cm by 52cm in
mahogany frame £100-150

Lot No Description



106

107 A Victorian Arts and Crafts salt
glazed sundial, octagonal form,
early brass gnomon inscribed Hours
Fly, on beaded edge head with
organic impressed panels, circular
waisted stem with impressed girdle
set on square base, 91cm high plus
gnomon £600-800



107

108 A Victorian Coalbrookdale rustic
cast iron garden bench, grape and
vine pattern, number 78766, slatted
steel strapwork seat, 163cm long
£1500-2000

Lot No Description



108

109 An Anglo Indian ebonised occasional table of oval form, the top surface centrally carved with a seated god flanked by a pair of elephants within a carved border of foliage and birds, the legs as four carved elephant heads with ivory tusks, holding pineapples and interspaced with a cross stretcher centrally mounted with four cobras around a bowl, 93cm long by 65cm high by 60cm deep £70-100

110 An 18th century oak bible box, shallow back rail, hinged slope top enclosing three small drawers, chip cut edges and frieze with central escutcheon, on later stand with urnular turned front legs, H stretcher to base, 94cm high by 70cm wide by 44cm deep £80-120

111 A North Wales oak and pine dresser of typical form, moulded edge rectangular top over a T shape arrangement of three drawers above a pair of central drawers flanked by panel doors enclosing shelves, associated oak open back with shelves and metal cup hooks, glazed small cabinet and side spice drawers, 203cm high by 156cm wide by 47cm deep £300-500

Lot No Description

112 A Jacobean revival carved oak court cupboard, in two portions with blind carved pediment with pendants over a pair of carved panelled doors, the lower portion with a pair of carved and panelled doors enclosing a shelved interior incorporating a cutlery drawer, circa 1920, 188cm wide by 160cm high by 58cm deep £200-300

111



112



- | <u>Lot No</u> | <u>Description</u> |
|---------------|---|
| 113 | An unusual elm top refectory table, probably 17th century, the rectangular well figured single plank top on cheval style oak support with square oak verticals with horizontal terminals and stretcher, 204cm long by 65cm wide by 80cm high, together with six unmatched circular top four leg stools (7) £600-800 |

113



- | | |
|-----|---|
| 114 | An early 20th century Sheraton revival mahogany ladies writing bureau, angled pediment with floral inlay, inlaid moulded edge rectangular top above hinged panel fall inlaid with foliage and chequer banding enclosing a fitted interior, line inlaid writing surface above a pair of drawers with brass handles, supported on line inlaid square taper legs with low shelf, pot casters, 123cm high by 61cm wide by 40cm deep £50-100 |
|-----|---|



114

- | | |
|-----|--|
| 115 | A 19th century inlaid rosewood vitrine of rectangular form, ebonised moulded edge top over foliate frieze, large glazed door enclosing fabric lined shelved interior flanked by inlaid and gilt metal mounted columns, set on plinth base, 98cm high by 76cm wide by 29cm deep £50-100 |
|-----|--|



116

- | <u>Lot No</u> | <u>Description</u> |
|---------------|---|
| 116 | A 19th century German Grunderzeit period walnut display cabinet, the glazed upper portion with moulded cornice over a plain frieze above a pair of fluted pilasters flanking a pair of doors enclosing a shelved and mirrored, cream interior, the projecting lower portion with full width slide above a single drawer and a pair of doors all with carved panels, the whole set on bun feet to the front and block feet at the rear, 195cm high by 104cm wide by 54cm deep £500-800 |

<u>Lot No</u>	<u>Description</u>	<u>Lot No</u>	<u>Description</u>
117	A Victorian mahogany sofa, moulded serpentine top rail, upholstered back and scroll arms, stuff over seat, show frame supported on turned legs and brass castors, 100cm high by 206cm wide by 65cm deep £200-300	123	Jacobean style carved oak box settle, the back dedicated to Roger & Grace, Waddington 1569 below an inset carved panel with figures, topped by a crest rail carved with a coat of arms and 'PRO RECTO SEMPER', the box base with a slide in seat and bears legend 'fear God & Honour Ye King', 100cm wide by 63cm deep by 147cm high £300-500
118	An early 20th century gold silk table cover of rectangular form with intricately woven foliage in coloured silks, knotted tassel border, 150cm by 110cm £60-100	117	
119	Victorian walnut firescreen, central fabric panel above pierced fretwork, between two barley twist columns. The base with barley twist supporting carved feet, 59.5cm wide by 44cm deep by 104cm high £70-100		
120	A 17th century carved oak six plank coffer with part of an iron clasp to the carved front and later hinges, 60cm wide by 27cm deep by 36cm high £80-120		
121	A George III mahogany scalloped edge tilt top supper table, the snap top over gun barrel column with carved base supported on three splayed and carved legs with pad feet, 81cm diameter by 72cm high £450-550	121	
122	A 19th century walnut framed mirror, a plain crossbanded frame with a carved and gilt inner moulding surrounding an oblong mirror with indented upper corners, topped with a crest panel painted with flowers and a bird, 36cm wide by 76cm high £80-120	123	

